

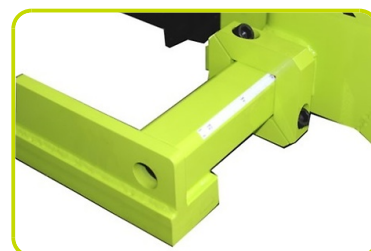
# TX 10/16 STRADDLE

## THE RAISING POWER



### TX STRADDLE

The TX series stackers are characterized by manual traction and electrohydraulic lifting technology. These stackers are very steady and are suitable for lifting very heavy loads safely. Version 12 (1.2 t) includes polyurethane wheels as standard to reduce resistance and effort required even with full load capacity. The main feature of the Straddle series is the possibility to adjust the forks and the clamps for great versatility in the handling of loads of different sizes.



### START KEY AND BATTERY CUT-OFF (ISOLATOR) SWITCH

The start key on the TX stacker performs a double function:

- switches the stacker on/off;
- is an emergency control, i.e. it completely stops battery power supply and thus prevents the lifting of forks.



### FOOT BRAKE

The foot brake, which is available on the MX and TX machines, performs the parking brake function.



## TILLER

The ergonomic tiller allows an excellent directionality of the machine, thanks to a steering system on both rear wheels.



## ADJUSTABLE BUFFERS

The TX 12 version is equipped with adjustable buffers that minimize possible oscillation during lifting.



## PROTECTIVE COVER

It allows an easier access to the battery housing for faster ordinary maintenance.



### Description

1.1 Manufacturer				LIFTER
1.3 Drive				Manual
1.4 Operator type				Pedestrian
1.5 Load capacity	Q	Kg		1000
1.6 Load centre distance	c	mm		600
1.8 Load axle to end forks	x	mm		755
1.9 Wheel base	y	mm		1130

### Weights

2.1 Service weight (battery included)	Kg		415
2.2 Axle load, laden rear	Kg		962
2.2 Axle load, laden front	Kg		453
2.3 Axle load, unladen front	Kg		270
2.3 Axle load, unladen rear	Kg		145

## Tyres/Chassis

3.1 Tyres: stabilizers wheels - front		RUBBER
3.1 Tyres: rear wheels		NYLON
3.3 Tyre size: Load rollers - Diameter	mm	82
3.3 Tyre size: Load rollers - Width	mm	70
3.4 Tyre size: stabilizers wheels front - Diameter	mm	200
3.4 Tyre size: stabilizers wheels front - Width	mm	50
3.5 Tyre size: rear wheels - Q.ty (X=driven)	nr	2
3.6 Tread, front	b10 mm	620
3.7 Tread, rear min	b11 mm	1080
3.7 Tread, rear max	b11 mm	1387

## Dimensions

4.2 Height, mast lowered	h1 mm	1970
4.3 Normal free lifting	h2 mm	1510
4.4 Lift height	h3 mm	1510
4.5 Height, mast extended	h4 mm	2045
4.9 Height of tiller in drive position max	h14 mm	1080
4.15 Height, lowered	h13 mm	35
4.19 Overall length	l1 mm	1640
4.20 Length to face of forks	l2 mm	640
4.21 Overall width min	b1 mm	750/1199
4.21 Overall width max	b1 mm	750/1504
4.22 Fork dimensions - Thickness	s mm	35
4.22 Fork dimensions - Width	e mm	100
4.22 Fork dimensions - Length	l mm	1000
4.24 Fork carriage width	b3 mm	825
4.25 Distance between fork arms max	b5 mm	790
4.25 Distance between fork arms min	b5 mm	230
4.26 Distance between legs min	b4 mm	965
4.26 Distance between legs max	b4 mm	1270
4.32 Ground clearance, centre of wheelbase	m2 mm	40
4.34 Aisle width	Ast mm	2588
4.35 Turning radius	Wa mm	1790

## Performance data

5.2 Lifting speed laden	m/s	0.09
5.2 Lifting speed unladen	m/s	0.12
5.3 Lowering speed laden	m/s	0.4
5.3 Lowering speed unladen	m/s	0.1

## Electric motors

6.2 Lift motor power	kW	1.6
6.4 Battery voltage	V	12
6.4 Battery capacity, Min	Ah	74
6.4 Battery capacity, Max	Ah	74
6.5 Battery weight, Min	Kg	18
6.5 Battery weight, Max	Kg	18
8.4 Sound level at driver's ear	dB(A)	67

\* Integrated battery and charger

