

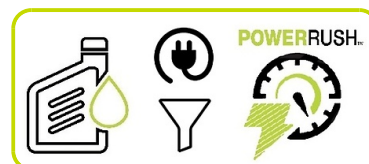
P7500I

Compact & Solid



FEATURES

- Inverter technology: stable power for safe operation of sensitive electronics.
- OHV engine provides consistent power for multiple applications.
- Low-oil level shutdown automatically safeguards engine from damage.
- Economy mode automatically adjusts the engine speed to the optimum level to provide excellent fuel economy and noise reduction.
- USB ports charges your mobile electronics so you can stay connected.
- Compact and Solid Canopy
- Easily transportable by handle.
- Ideal for applications requiring low noise
- Connector for Parallel kit
- Oil Bottle, Funnel and Plugs Included in the carton box



POWERRUSH

MORE STARTING CAPACITY ALLOWING YOU TO DO MORE WITH LESS. Powerrush increases electrical current upon demand, above rated output when starting electric motors.

PERFORMANCE

Frequency	Hz	50
Voltage	V	230
Phase		1
Max Power	Watts	7000
Rated Power	Watts	6500



Engine

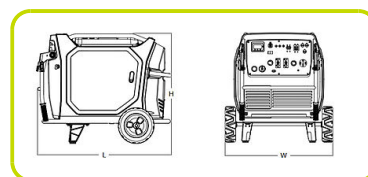
Engine Brand		Pramac
Type		OHV
Exhaust emission level		Stage V
Operating Speed Nominal	rpm	Variable
Fuel		Petrol
Starting Systems		Electric (+Recoil)
Oil capacity	l	1.45
Low Oil Shutdown		√

Alternator

Voltage regulation system		Inverter
---------------------------	--	----------

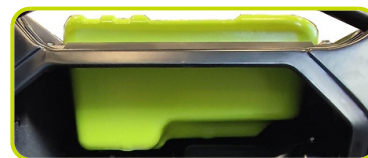
Dimensional data

Length	(L) mm	950
Width	(W) mm	765
Height	(H) mm	773
Dry weight	kg	146
Carton box dimension LxWxH	mm	1010x660x742



Autonomy

Fuel tank capacity		25
Fuel consumption 75%	l/h	2.25
Running time 75%	h	11



Noise level

Guaranteed noise level (LWA)	dB(A)	92
Noise pressure level @ 7 m	dB(A)	64

GENSET CONTROL

COMMANDS / INSTRUMENTATION

- Selector switch: O/I | Power Button
- Economy mode automatically adjusts the engine speed to the optimum level to provide excellent fuel economy and noise reduction.

- Outputting energy (light - Green)
- Overloading and Oil alarming (light - Red)
- Voltmeter / Hourmeter / Frequency meter / Fuel Gauge
- Parallel kit receptacles

PROTECTIONS

- Over-load, Oil Guard, Short Circuit, High temperature, Over-speed protections
- Protection Control panel IP 44

OUTPUT:

- n°2 USB DC 5V 2A

SOCKET TYPE

SCHUKO 230V 16A IP44	2
2P+T CEE 230V 32A IP44	1



The information is aligned with the Data file at the time of download. Printed on 20/07/2023 (ID 19635)

©2023 | PR Industrial S.r.l unipersonale – Loc. Il Piano – 53031 Casole d'Elsa (SI) – ITALY. Company subject to the management and coordination of Generac Power Systems Inc. | All rights reserved | Image shown may not reflect actual package. Specifications subject to change without notice

